



THE
COURT
THEATRE

THE MERIDIAN ENERGY SEASON

18/19



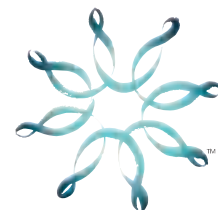
Meridian Energy – lighting up the stars on stage

Meridian Energy is proud to get behind those who support the theatre. Whether you're a star on the stage, supporting from behind or watching from the seats – everyone has an important role to play.

We're passionate about supporting local communities too, which is why we're pleased to be a major sponsor of The Court Theatre.



To join a power company that shares your passion call
0800 496 496 or visit **meridian.co.nz**



meridian

THE MERIDIAN ENERGY 2018/2019 SEASON

Kia ora.

Welcome to the Meridian Energy 2018/2019 Season.

Welcome to a world of plays and theatre experiences that have been chosen and created to offer you the opportunity to see the world with new eyes.

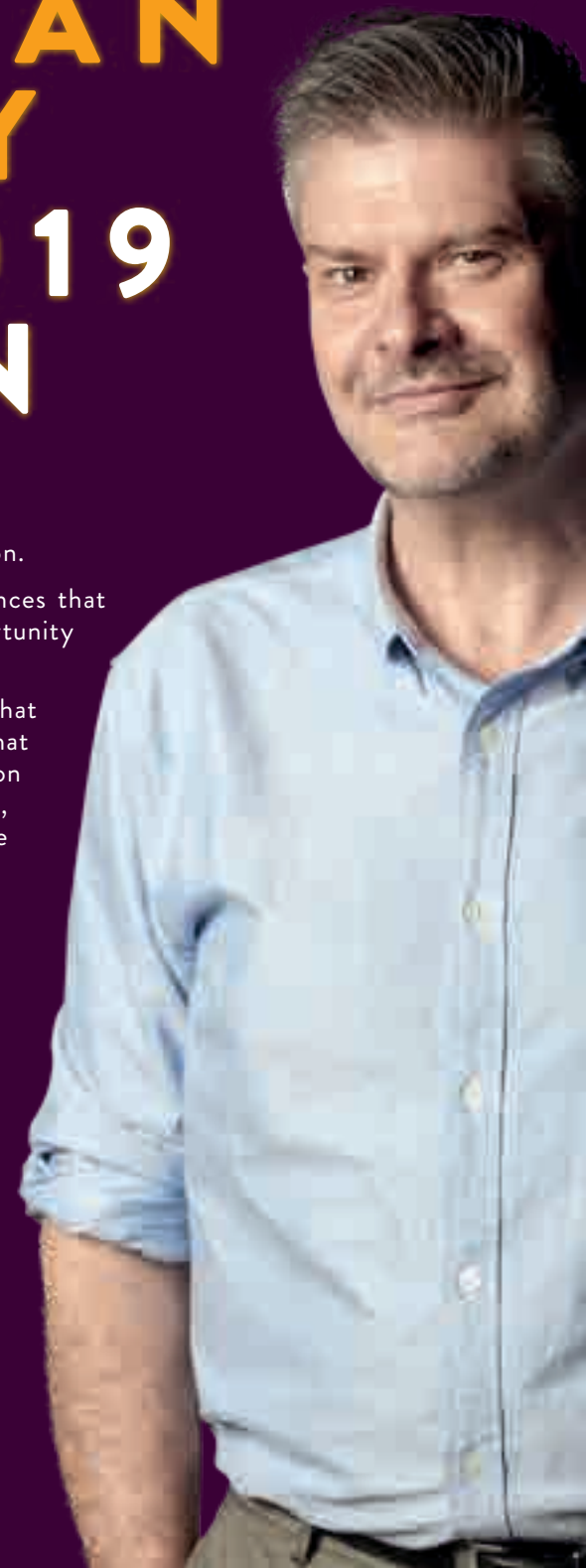
This vibrant kaleidoscope of work includes voices that you may not have heard before. It is a season that rejoices in and questions our humanity. It is a season of compassion, joy and edge. A season of warmth, daring and excitement. A season composed of the stuff of life for all the people of Ōtautahi.

As practitioners we are excited by the potential of this season and with you, the audience, the true owners of The Court Theatre, we will bring these stories gloriously to life.

Welcome, to what you might well believe to be our boldest season of work ever.

Ngā mihi,

Ross Gumbley,
Artistic Director





4 - 25 AUGUST 2018 WRITTEN BY / William Goldman
BASED ON THE NOVEL BY / Stephen King DIRECTED BY / Dan Bain

STEPHEN KING'S MISERY

When romance novelist Paul Sheldon wakes from a car crash somewhere in rural Colorado, he finds the kind smile of Annie Wilkes beaming down at him.

She is his number one fan.

Having rescued Paul from the accident that's left him with broken legs, Annie is now nursing Paul back to health. The storm that led to Paul's accident has caused road closures and power cuts but Annie has promised to get him to hospital and to call his agent as soon as she can.

But if that's the truth... then why is his bedroom door locked?

As Paul tests the boundaries of his confinement, he pulls a thread which rapidly unravels Annie's lies.

Known across the world for his hit novels such as *It*, *The Shining*, *The Shawshank Redemption* and *The Green Mile*, Stephen King is the master of psychological horror-thriller novels.

In this tension-filled stage adaptation of one of his bestsellers, *Misery* starts as a story of quaint obsession and turns into a living nightmare.

Contains adult themes, violence and coarse language.

ORIGINAL BROADWAY PRODUCTION PRODUCED BY WARNER BROS.
THEATRE VENTURES IN ASSOCIATION WITH CASTLE ROCK ENTERTAINMENT,
LIZ GLOTZER, MARK KAUFMAN, MARTIN SHAFER, RAYMOND WU.



15 SEPTEMBER - 6 OCTOBER 2018 WRITTEN BY / Alison Quigan
DIRECTED BY / Ross Gumbley ARRANGEMENTS BY / Laughton Pattrick

MUM'S CHOIR

For years the O'Reilly household was alive with music - Mum took to the keys, Uncle Noel whipped out his spoons and Aunty Nola shook the rafters with her vibrato. These sing-alongs would make your heart soar and your jaw ache.

But now the piano keys have fallen silent. Mum has sung her last song, and the kids - now middle aged with children of their own - return to a house haunted with the half-remembered melodies of their childhood.

Mum hasn't left quietly though. Her final request is an almost impossible task: for her kids to sing Faure's *Requiem* at her funeral. As they fight

over the solos - and mum's furniture - the O'Reillys relive their childhood, the good old songs they used to sing and what it means to be a family.

Written by Alison Quigan, the writer of *Flagons and Foxtrots* and *Shop Till You Drop*, *Mum's Choir* is a heartwarming comedy about a gloriously typical New Zealand family.

With songs such as *Good Ship Lollipop*, *That's Amore*, *Hine E Hine*, and *Accentuate the Positive*, The Court Theatre celebrates New Zealand Theatre Month by bringing back this loved classic that took Aotearoa by storm after its debut in 2005.

BY ARRANGEMENT WITH

NEW ZEALAND PLAYWRIGHTS
PLAYMARKET
AGENT. ADVISOR. BOOKSHOP

SHOW SPONSOR

CAXTON
DESIGN & PRINT EXCELLENCE



27 OCTOBER - 10 NOVEMBER 2018 WRITTEN BY / Albert Belz
DIRECTED BY / Nancy Brunning

ASTROMAN

There was a time when playing video games meant you had to leave the house. The sounds of *Pac-Man*, *Donkey Kong* and *Galaga* called as you pushed forward on your BMX. The coins in your pocket jangled as you pulled up outside the arcade, ready to beat the latest high scores.

It's 1983, and young Hemi 'Jimmy' Te Rehua knows how to dominate the games at the Whakatāne Astrocade Amusement Parlour. Too smart for his own good, Jimmy has a knack for trouble. A computer whiz who snoozes

through school, Jimmy is about to be given an education of a different sort when his mischief finds him working for the grouchy Astrocade owner, Mr Macrae.

It's easy for Jimmy to work out the patterns of Mr Macrae's video games but it isn't quite so simple working out the formula for growing up. A uniquely Kiwi coming-of-age story, *Astroman* is full of heart, Michael Jackson dance moves and a giant dollop of '80s nostalgia.

Contains mild coarse language.

BY ARRANGEMENT WITH

NEW ZEALAND PLAYWRIGHTS
PLAYMARKET
AGENT. ADVISOR. BOOKSHOP

SHOW SPONSOR


pwc



24 NOVEMBER 2018 - 19 JANUARY 2019

WRITTEN BY / Andrew Lloyd Webber & Tim Rice

DIRECTED BY / Stephen Robertson MUSICAL DIRECTION BY / Richard Marrett

JESUS CHRIST SUPERSTAR

With thirty pieces of silver and a kiss on the cheek, the ultimate act of betrayal is committed.

In 1971, *Jesus Christ Superstar* burst onto the worldwide stage and changed the face of musical theatre forever.

Through the eyes of the betrayer, Judas Iscariot, *Jesus Christ Superstar* tells the story of the last days of the man he once loved and admired. Through Judas' eyes, the very human soul beneath the divine icon is bared – troubled, doubting, loving and scared.

A blazing score from Andrew Lloyd Webber of *The Phantom of the Opera*, *Evita* and *Cats* fame combines with Tim Rice's

inventive and evocative lyrics to make a musical still as devastatingly powerful as the first time it hit the stage.

Nominated for eight Tony Awards and seven Olivier Awards over its almost 50 year history, the greatest rock opera ever created shines a light on the power of the human spirit.

What would it take for you to betray the Son of God? And how would you feel if you did?

Never before has a simple kiss on the cheek meant so much.

Contains violence.

™ © 1996 THE REALLY USEFUL GROUP LIMITED. BY ARRANGEMENT WITH ORIGIN™ THEATRICAL ON BEHALF OF THE REALLY USEFUL GROUP LIMITED.

SHOW SPONSOR





23 FEBRUARY - 16 MARCH 2019 WRITTEN BY / Simon Bent
BASED ON THE NOVEL BY / Ingvar Ambjørnsen DIRECTED BY / Lara Macgregor

ELLING

Elling is anxious. Always. He also suffers from neurotic tendencies, has bouts of dizziness and prefers not to go outdoors. Kjell Barne is in his forties and a career virgin. He is a gentle giant, fiercely loyal and really, really wants to have sex.

These two middle-aged misfits have been given an ultimatum: make it work living together in a state-sponsored apartment in Oslo, or return to the institution where they met – this time for good. It's an ultimatum that's not so easy for the co-dependent pair; Kjell wants nothing more than to find a woman in the outside world, while budding poet Elling is afraid to leave the house.

Based on the novel by Norwegian author Ingvar Ambjørnsen, winner of the Brage Prize and the Telenor Culture Award, *Elling* offers both an insight into two spectacularly individual lives and some wonderfully bad poetry.

Skillfully adapted for the stage by English playwright Simon Bent, it is a sensitive, eccentric and unsentimental play that asks us not to feel pity for its protagonists, but to celebrate their differences.

Contains adult content and some coarse language.

SHOW SPONSOR



A woman with reddish-brown hair pulled back, wearing a mustard yellow textured top and a necklace with blue and gold circular pendants. She has a shocked or frustrated expression, with wide eyes and an open mouth. She is holding several white papers in her hands. The background is a solid bright green, with several white papers floating or falling around her, some partially visible at the edges of the frame.

30 MARCH - 27 APRIL 2019 WRITTEN BY / Christina Stachurski
DIRECTED BY / Ross Gumbley

EQ F@#%ING C

Through every passing day, through every aftershock and through every night still sleeping in a room with the whole family, E.Q.C. are there, telling Michelle and Daz that their claims are being processed and that there may be some delays.

Oh yes. Delays.

It's been three years since the 2011 Canterbury quakes, and Michelle calls E.Q.C. multiple times a day. She's still not getting any answers.

Michelle's optimism has turned to

frustration and Daz has a plan to take matters into his own hands.

When Daz arrives home with a stolen portaloo and Gerry Brownlee tied up inside, the couple begin to wonder if they could do some good for the people of Canterbury with this kidnapping.

Can Daz and Michelle convince Gerry to use his emergency powers, or is Gerry facing a long imprisonment inside the portaloo of doom?

Contains some coarse language.

BY ARRANGEMENT WITH

NEW ZEALAND PLAYWRIGHTS
PLAYMARKET
ORG.NZ
AGENT. ADVISOR. BOOKSHOP

SHOW SPONSOR

The edge 88.9
CANTERBURY



11 MAY - 1 JUNE 2019 WRITTEN BY / John Cameron Mitchell
MUSIC AND LYRICS BY / Stephen Trask DIRECTED BY / Dan Bain

HEDWIG AND THE ANGRY INCH

If you didn't know her name before, you soon will. Meet Hedwig.

To walk away, you've got to leave something behind – and so Hansel Schmidt does, undergoing a traumatic sex-change that transforms him into Hedwig. With her new identity, Hedwig escapes the iron curtain to begin life in the west with her freshly-minted American husband.

Everything seems perfect until her husband leaves her and Hedwig must fend for herself. With nothing left, she returns to her first love: music.

The winner of four Tony Awards, and a show that Rolling Stone called “the best rock musical ever,” Hedwig and the Angry Inch is a darkly humorous tale about sacrifice, gender identity and love in all its forms. Set against an electrifying, glam-rock soundtrack, Hedwig and her band The Angry Inch relive the heart-breaking and hilarious history that led her to this moment.

Contains adult themes and coarse language.

BY ARRANGEMENT WITH HAL LEONARD AUSTRALIA PTY LTD ON BEHALF OF DRAMATISTS PLAY SERVICE.



22 JUNE - 20 JULY 2019 WRITTEN BY / Christopher Hampton
BASED ON THE NOVEL BY / Pierre Choderlos de Laclos
DIRECTED BY / Ross Gumbley

LES LIAISONS DANGEREUSES

As makers of taste they are without peer. As beings of wit and panache they are without exception. As creatures of debauchery they are without equal.

The Marquise de Merteuil and the Vicomte de Valmont are bored. They have seduced whom they wanted and ruined dozens of reputations. Why? To pass the time and, frankly, because they can. They are dangerous to know and only open their mouths when they have first calculated how much damage they can do.

But their lives of supreme self-indulgence are about to fall apart. At risk is their social standing, their integrity,

even their lives... because one of them is about to fall in love.

Pierre Choderlos de Laclos' eighteenth century satirical novel, expertly adapted for the stage by Christopher Hampton, has lost none of its power and bite. Its depiction of a society lost in itself and about to be cleansed by the French revolution is one of the great cautionary tales of all time. It warns that, in spite of a sumptuous surface, things can be rotten underneath.

Make sure that those who smile at you are your friends.

Contains adult themes.

SHOW SPONSOR
Newstalk
ZB
CHRISTCHURCH • 100.1FM

THE forge AT THE COURT

ASSOCIATE DIRECTOR'S NOTE

Kia ora koutou.

The Forge exists as a counter-point to the Meridian Energy mainstage season. Whether that is in access, form or content, when the mainstage wears the tragedy mask, The Forge dons comedy. When they zig, we zag. When they hug, we cut.

This is my first season as The Court Theatre's Associate Director. I am beyond excited about the pieces we will be showing you in 2018.

Andrew Loeb's *Ideation* is the best script I read last year. It is a big, big idea with sharply observed characters and dialogue that just hums. I can't stop thinking about it.

The Early Early Late Show is a favourite recurring show in The Forge season. The Court Jesters have created that seemingly impossible blend: a show to which you can take both a six and an eleven-year-old.

Ē Toru is a new project from The Forge which

showcases, develops and gives access to the growing number of exceptional Māori and Pasifika theatre groups and collectives based in Ōtautahi.

Finally, last year's sell-out adaptation of *A Christmas Carol* returns to round out 2018. This version of the family-friendly, audience-interactive feast promises to be the best yet.

Whether you are a Forge regular or just dipping your toe in for the first time, there is something in this season that will appeal to, affect, or move you.

Ngā mihi.



Dan Bain
Associate Director





2 - 23 JUNE 2018 WRITTEN BY / Aaron Loeb DIRECTED BY / Dan Bain

IDEATION

“What are we going to do with all the bodies?”

Everything today is just a problem to be solved by marketing teams and think-tanks.

The latest problem to be hashed out in the boardroom? Genocide.

With only a whiteboard and their own dubious morals as a compass, the team of executives working on this project must decide whether they are saving the world, being tested by their superiors... or designing the blueprints for

another holocaust.

An icy, sophisticated thriller, Andrew Loeb’s *Ideation* is the *Black Mirror* of contemporary theatre. Paranoia, conspiracies, atrocities and corporate strategy collide with chilling effect. How far away are we from the world’s next genocide? Is it being planned as we speak, designed by unelected people in expensive suits?

Contains adult themes and some coarse language.

PRESENTED BY PERMISSION OF ORIGIN THEATRICAL ON BEHALF OF PLAYSSCRIPTS, INC.



7 - 21 JULY 2018 DIRECTED BY / Brendon Bennetts

THE EARLY EARLY LATE SHOW

The family-friendly favourite which delivers the fun of *Scared Scriptless* to an audience of all ages is back.

Christchurch's Court Jesters are the masters of fast, funny, improvised comedy. They'll create scenes, stories and songs on the spot with nothing but your ideas to inspire them.

These winter school holidays, join them in the new Science Alive! building in the former

Christchurch District Court.

Will it be Science-y?

Will it be District Court-y?

Either way it will definitely be Alive-y!

The only show in town that both your six and your eleven year old will enjoy, *The Early Early Late Show* is an annual highlight on the KidsFest calendar.



9 - 11 AUGUST 2018 WRITTEN BY / Y Not; Tania Gilchrist; Tavita Nielsen-Mamea

Ē TORU

Three Māori and Pasifika companies from Ōtautahi each present an evening of compelling and essential works in progress. Each night, a new and unique piece will meet an audience for the first time. Be part of their creation.

Palu - Samoa and Tonga. How similar are they? Aren't they always fighting? Y Not's tri-lingual play explores those similarities and differences over the shared kava bowl.

Rīpeka - 1860, The East Cape. 2018, Christchurch. What does it mean to be a wife? To resist. To have faith. To sacrifice. In her time. In our time.

Ko Au Tuvalu - Tuvalu is sinking beneath the waves. Its people will be the first environmental refugees of the 21st century. Three sisters plan their departure to the place that will be their new home: Aotearoa, New Zealand.



1 - 22 DECEMBER 2018 WRITTEN BY / Dan Bain DIRECTED BY / Ross Gumbley

A CHRISTMAS CAROL

They said it was impossible... but The Court Jesters thrive on impossible, so the challenge of putting on *A Christmas Carol* by Charles Dickens in its entirety – with only two actors and a pianist – for the third year in a row barely makes them break a sweat. Completely sold-out for the last two years, The Court Jesters' fun, family-friendly and interactive version of *A*

Christmas Carol is quickly establishing itself as a must-do Christchurch Christmas tradition.

Featuring **you** as The Ghost of Christmas Past, **your mum** as Mrs Cratchet, and **your work friend's weird kid** as Tiny Tim, Dan Bain's adaptation of *A Christmas Carol* is a joyful and hilarious celebration of the good that can be found in all of humanity.

BY ARRANGEMENT WITH





THE
COURT
YOUTH COMPANY

28 - 30 JUNE 2018 WRITTEN BY / Tanya Ronder
BASED ON THE NOVEL BY / DBC Pierre

VERNON GOD LITTLE

"Let me introduce myself : Vernon Gregory Little. My best friend put a gun in his mouth and blew off his head; my classmates are dead and I'm being blamed for it..."

Things go from bad to worse for Vernon after his best friend murders sixteen of his classmates before turning the gun on himself. With nobody left to blame, Vernon becomes the town's scapegoat and his pain spirals out of control with the arrival of television reporter Eulalio "Lally" Ledesma.

First nominated for an Olivier Award for Best New Play during

its Young Vic première in 2007, *Vernon God Little* is both a dark and comic take on the commercialisation of horrific events, while simultaneously highlighting the importance of looking out for other people. This gripping and twisted tale of love, betrayal and unlikely friendships proves that desperate times can throw up the most unlikely of heroes.

Performed by The Court Youth Company, this play is the perfect vehicle for young actors to explore a topic that is terrifyingly relevant, comic and playful.

AN AMATEUR PRODUCTION OF VERNON GOD LITTLE BY SPECIAL
ARRANGEMENT WITH NICK HERN BOOKS AND NZ PLAY BUREAU LTD

13 - 15 DECEMBER 2018 ADAPTED AND DIRECTED BY / Dan Bain
BASED ON THE NOVEL BY / Bram Stoker

CHILDREN OF THE NIGHT

"Listen to them. The children of the night. What music they make!"

Lucy walks the halls at night, dreaming of a tall, pale man. When she wakes she has no memory of him.

She isn't alone.

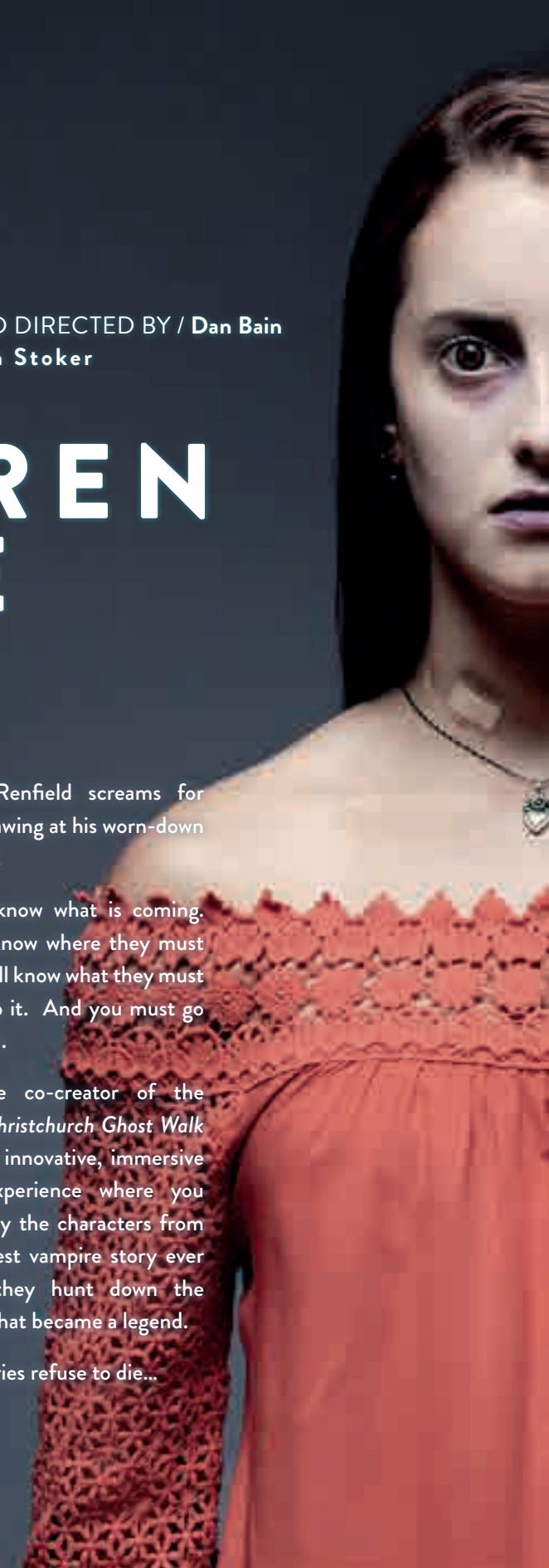
Jonathan's hands shake as he writes his diary, struggling to note down things that can't be real. Mina's neck won't stop bleeding, while Abraham recites the rosary and sharpens stakes made of yew. He alone knows the extent of what they face. Chained to a wall in the

asylum, Renfield screams for blood, gnawing at his worn-down fingertips.

They all know what is coming. They all know where they must go. They all know what they must do to stop it. And you must go with them.

From the co-creator of the original *Christchurch Ghost Walk* comes an innovative, immersive horror experience where you accompany the characters from the greatest vampire story ever told as they hunt down the monster that became a legend.

Some stories refuse to die...





EVERY FRIDAY + SATURDAY 10:15PM

SCARED SCRIPTLESS

Late every Friday and Saturday night, the lights go out at The Court Theatre and The Court Jesters take over... bringing you *Scared Scriptless*.

Scared Scriptless has been running strong for 28 years. It is a late night improvised show where the wit of stand up, the exhilaration of theatre and the danger of not knowing what's happening all collide in a glorious, theatrical mess.

It's one part cheeky, one part dangerous and all parts hilarious.

Sit back and enjoy the comedy... or get involved by shouting out suggestions to inspire the improvisers. No matter your involvement, *Scared Scriptless* will have you doubled-over in laughter.

Scared Scriptless. You have to see it, and once you see it, you'll want to come back.

SCHOOLS TOUR 2018

WRITTEN AND DIRECTED BY / Holly Chappell-Eason & Rutene Spooner

HE KURA KŌRERO

THE GIFT OF SPEECH

“Ko te reo kia tika, ko te reo kia rere, ko te reo kia Māori!”

Kaiarahi is fun, bright and strong, but sometimes struggles with being brave. Join Kaiarahi's adventure to find the courage to speak Te Reo Māori. Be a part of the exciting journey and delve into magical worlds through language.

He Kura Kōrero inspires young people to be bold and brave when using Te Reo Māori in

their everyday life, whether they know a little or a lot.

He Kura Kōrero is a new bilingual tale of wonder and delight from the same creative team that brought you *Māui me te Rā, Matariki – The Little Eyes in the Sky* and *Matatihi – Maia's Journey of Bravery*. This stunning performance explores Te Reo Māori through live music, puppetry, kapa haka, song and storytelling.



7 - 21 JULY 2018 WRITTEN BY / Javier Jarquin

THE LITTLEST NINJA



Ninjas are cunning!

Ninjas are clever!

Ninjas know cool moves!

Miki is little and everyone always seems to forget she's there. But when the villainous Hanzo comes to steal the Temple's ancient scroll, Miki learns that maybe there is something good about being a ninja who can be invisible...

16 - 26 JANUARY 2019 WRITTEN BY / Emma Cusdin

THUMBELINA



It's tough being a little lady. Winter is coming and Thumbelina's tulip house is falling to pieces. Her only choice is to embark on a big adventure to find somewhere new to live and hopefully to discover who her real friends are on the way. This production of *Thumbelina* is no tall story, but rather a celebration of life's small victories.

KIDS' SHOWS SUPPORTED BY



29 SEPTEMBER - 13 OCTOBER 2018 WRITTEN BY / Dan Bain

HANSEL AND GRETEL

Hansel and Gretel have no food to eat. Their Dad has a new wife who seems obsessed with how plump they are. Time to head out into the woods with some breadcrumbs... See the story you know so well told in a way never seen before in this silent comedy adaptation of the fairy tale classic.



13 - 27 APRIL 2019 WRITTEN BY / Andrew Todd

TIME MACHINE

Dr Harriet Wells has invented a Time Machine. Snooty patron of the sciences, Lord Fotherington-Smythe, thinks that's nonsense. In order to prove him wrong, Wells sets out on a journey through time that will lead her to being chased by a T-Rex in the past, visiting us in 2019 and travelling to a future that is controlled by mean robots!



FRESH INK

It's raw; it's grass roots; it's never been seen before.

Fresh Ink is a festival of three curated readings of developing plays. Help playwrights discover where the laughs and gasps are and get rewarded by the richness of three very different – yet all very Kiwi – new plays.

13 MAY 2018
WRITTEN BY / **Alison Quigan**

SIANA

After 30 years, Cassie swaps photography for paperwork, taking on a role at the local council. Not only is she up against bureaucratic hurdles but the move also pushes her into facing her ex-husband and the haunting memories of her beautiful dancing daughter, Siana.

20 MAY 2018
WRITTEN BY / **Karen Zelas**

THE FALLING

Minnie Dean. The first and only woman to be hanged in New Zealand. Following doctoral student Clemency Xavier's pursuit into Minnie's case, *The Falling* maps out the two women's lives as they become entwined, risking Clemency's own relationships and leaving her spiralling.

27 MAY 2018
WRITTEN BY / **Joe Musaphia**

THE SEXIEST MAN IN THE WORLD

Chip Stone is sexy. Dangerously sexy. The movie star has returned home looking to make amends with his brother, Brian, a struggling playwright – but Brian isn't buying it. Chip's arrival is wreaking havoc in an environment that's already a pressure cooker as Chip captures the attention of a string of women, including Brian's wife. Be ready for things to go off and come off!

All three readings contain coarse language.

30 SEPTEMBER 2018
WRITTEN BY / **Oscar Kightley & Simon Small**
PRESENTED WITH / **Pacific Underground**

FRESH OFF THE BOAT

Step back into the 1990s to meet Charles as he emigrates from Samoa to join his cousin Elizabeth and her family in New Zealand.

Elizabeth attempts to keep the peace as two different ways of life collide, but intergenerational, familial and personality clashes soon start to crack open...

Fresh Off the Boat is part of our celebrations for NZ Theatre Month.

Contains coarse language.

7 OCTOBER 2018
WRITTEN BY / **Stephen Adly Guirgis**

THE LAST DAYS OF JUDAS ISCARIOT

A courtroom in Purgatory.

The trial of Judas Iscariot.

A litany of witnesses enter the court to give evidence, ranging from Mother Teresa to Satan.

It's one Hell of a show.

Contains adult content and coarse language.

Lively. Invigorating. Indelible.

Kick off spring with two rehearsed readings of acclaimed plays which have wowed audiences throughout New Zealand and overseas.

INDELIBLE INK

COURAGEOUS
HUMOUROUS
NEIGHBOURHOOD
ENCOURAGING
HONOURING
VIGOUROUS
NOURISHING
THE COURT EDUCATION

EDUCATION AT THE COURT

Push the boundaries of your imagination and unleash your potential.

The Court's Education programmes nurture the future talent of New Zealand theatre and share the magic of the art form with the whole community.

Through our inspiring classes and workshops, experience the passion and thrill of the craft and release your creativity.

Dare to dream.

Dare to explore.

Learn more at www.courteducation.org.nz

The Court Education programmes are generously supported by



THE COURT THEATRE IS YOUR THEATRE

Through a range of initiatives and extra opportunities, there's no excuse not to join us at The Court Theatre this season.

Pay What You Can

We mean it when we say that The Court Theatre is for everyone – and with that in mind, we've launched Pay What You Can. On one special night for each mainstage show, you'll be able to choose how much you'd like to pay for your tickets.

30 Below

For all mainstage Court Theatre shows, tickets are just \$30 for anyone under 30. Your rent may be high, and your supermarket bill may make your eyes water, but you'll have just enough cash left for a fantastic night out at The Court.

Play Mates

We've all been there: all dressed up, ready to go... but no one to go with. Play Mates brings together groups of people to see a show together. Hosted by a member of The Court community, groups meet before the performance to share a pizza, a drink and a discussion.

Audience Interactive 2018

On July 15 we want to hear what you think at Audience Interactive. We want to know what you'd love to see – and what you really wouldn't. Come along and join us in a spirited, in-depth conversation.

Gift Vouchers

Our gift vouchers make the perfect present and can be redeemed for any Court Theatre show over a 12-month period. Give your loved ones the gift of theatre.

Backstage Tours

Our backstage tours are a great way to go behind the scenes at The Court. Come on back to hear The Court's secrets, stories and anecdotes.



Start your evening with a **wood-fired pizza**,
hand-made from **fresh, locally-sourced ingredients**
right here in the foyer of
The Court Theatre.

Vegetarian and gluten free options.

Catering available.

*Please arrive at least an hour before the show.

NZ'S TOP COMEDIANS AT YOUR NEXT EVENT

The Court Jesters live and breathe comedy. They are available and taking bookings now for your 2018/2019 event.

Perhaps you're after a personalised performance. Our comics create an improvised comedy show tailored to your event and guests.

Perhaps you need an MC to run your event smoothly and keep the energy in the room crackling from one speaker to the next.

Perhaps you need ice-breakers; charming, confident and consistently funny comic characters to mingle and interact with your guests.

Or, perhaps you need them all. Whatever the size or scale of your event, conference or party, entrust your guests' entertainment to the team that makes Christchurch laugh every weekend.

Learn more at www.courtjesters.co.nz



MŌ TE AROHA O NGĀ TOI WHAKAARI
FOR THE LOVE OF THE PERFORMING ARTS

THE COURT FOUNDATION

Established in 1971, The Court has grown to become the most visited and loved theatre in New Zealand.

The Court has matched the ever-diversifying Christchurch population and creates and supports work for everyone in our community including children and families, the Tangata Whenua and Christchurch's growing Pasifika communities.

In 2011 things changed forever. You empowered us to be tenacious and bold and open our doors quickly. You showed us the importance of community and of being a place of gathering. With your help, we created our temporary home – The Shed.

It is now time to lay the foundations for a permanent future for The Court. We need a home which is fit for purpose, which allows us to have a vibrant and exciting future, and continue to grow and develop. We need a home where Cantabrians are at the heart of all we do.

We don't yet know how our future home will help shape the future of Christchurch, but we do know we need you to play an active part in our journey.

Join us by being supportive, generous and big-hearted. This is going to be a journey we cannot travel alone.

Learn more at
www.courtfoundation.org.nz

OUR THEATRE YOUR THEATRE THE COURT THEATRE

TOGETHER WE ARE LEADING WITH
COURAGE, DEDICATION
AND PLAYFULNESS.



PARTNERS & FUNDERS

PRINCIPAL SPONSOR



SEASON SPONSOR



CORE FUNDER



MAJOR PARTNERS





































PLATINUM PARTNERS































DIAMOND PARTNERS











































GOLD PARTNERS























SILVER PARTNERS















BRONZE PARTNERS















COURT 100 CLUB

PLATINUM



GOLD







SILVER

Hargreaves & Felton
Bruce & Mary Irvine
Gabrielle Tasman
John Rhind Ltd
NZ Agriseeds

ACTORS IN RESIDENCE



BUSINESS PARTNERS

Bankers: BNZ
Accountants: Hargreaves & Felton
Lawyers: Harmans Lawyers
Auditors: PWC
Printers: Caxton

CHARITABLE TRUSTS

The Pamela Webb Charitable Trust
The Farina Thompson Charitable Trust
The Elizabeth Ball Charitable Trust

SPONSORSHIP PARTNERS

The Court Theatre is proud to have a highly esteemed list of major funders, sponsorship partners and supporters. There are various levels of sponsorship available, providing a variety of benefits to assist in the achievement of each organisation's objectives.

To discuss these sponsorship options and an association with The Court please contact: Steve Brooker, Development Manager 021 221 7100 or steve.brooker@courttheatre.org.nz

THE COURT COMPANY

STAFF

Chief Executive
Philip Aldridge ONZM

Artistic Director
Ross Gumbley

Development Manager
Steve Brooker

Business Manager
John Liddiard

Production Manager
Flore Charbonnier

Associate Director
Dan Bain

Marketing & Communications Manager
Samantha McConnell

Content Writer
Laura Tretheway

Graphic Designer
Nick King

Education Manager
Rachel Sears

Kaihāpai Toi (Māori & Pasifika Producer)
Morehu Solomon

Literary Manager
Roanna Dalziel

Ticketing Manager
Michael Berry

House Manager
Colin Swift

Artist Manager
Susan Rendall

Office Manager
Annah Johnstone

Administrative Assistants
Avril Lockhead
Fiona Haines

Sponsorship Manager
Layla Moutrib

Client Manager
Andrea Winder

Development Coordinator
Rachel Vavasour

Court Jesters Manager
Emma Cusdin

Court Jesters Artistic Director
Dan Bain

Bar Supervisor
Christine Weston

Costume Manager
Sarah Douglas

Costume Department
Deborah Moor

Construction and Premises Manager
Bryce Goddard

Workshop Supervisor
Henri Kerr

Set Construction
Nigel Kerr
Richard Daem
Rob Hood

Head Stage Manager
Jo Bunce

Stage Manager
Erica Browne

Properties Manager
Christy Lassen

Head Technician
Giles Tanner

House Technician
Matt Short

Front of House
Anthea Johnson
Avril Lockhead
Emma Cusdin
Fiona Haines
Juliet Robertson
Laura Wilson
Leon von de Vril
Lisa Shannon
Louisa Hemm
Nicky Marshall
Rachel Pugh
Rebecca Radcliffe
Roisin Harris
Rosie Brailsford
Sue Fraser

BASE @ The Court Manager
Rod Thompson

R & M Support
Terry Preddy

Theatre Chaplain
David Winfield

SUPPORTERS

Patron
Dame Adrienne Stewart
DNZM, QSM

Chair
David Winfield

Honorary Secretary
Judy Ashton

Honorary Treasurer
Aileen Wyld

Honorary Membership Secretary
Jay Pollock

Committee
Annie Bonifant
Cheryl Colley
David McBrearty
Johanna McCord
John McSweeney
Lynn Vandertie
Pat Braithwaite
Suzanne Rivers
Tony Feaver
Wendy Carryer

FOUNDATION

Patron
Lady Stewart QSO

Chair
Catherine Boyer

Secretary
John McSweeney

Board
Cilla Glasson
David McBrearty
John Holland
Laura Palomino de Forbes
Tina Duncan

TRUST

Chair
Steven van der Pol

Secretary
Derek Hargreaves MNZM

Board
Annie Bonifant
David McBrearty
Erin Jamieson
Tony Feaver
Jane Huria CNZM
Stephanie Marsden
Steve Wakefield

COURT JESTERS

Ben Allan
Brendon Bennetts
Criss Grueber
Dan Bain
Emma Brittenden
Emma Cusdin
Henri Nelis
Jared Corbin
Jarred Skelton
Jeff Clark
Kathleen Burns
Kirsty Gillespie
Millie Hanford
Robbie Hunt
Scott Koorey
Vanessa Wells

Musicians
Hamish Oliver
Jack Page
Katie Cowan
Kris Finnerty
Matt Everingham
Nicky Marshall
Thomas Harris

Apprentices
Gabby Wakefield
Jake Danson
Monique Clementson
Nicole Cochrane

ASSOCIATES
Bryan Aitken
Brian Gray
Derek Hargreaves MNZM
Eilish Moran
Elric Hooper MBE
Geoffrey Heath
Joe Hayes
Judie Douglass
Lynda Milligan
Maurice Kidd
Margaret McConney
Paul Barrett
Stewart Ross
Stuart Alderton
Tony Geddes
Yvonne Martin

FELLOW OF THE COURT
John Harrison ONZM

TERMS & CONDITIONS

GENERAL INFORMATION

1. Although accurate at the time of publication, information in this brochure may be subject to change.
2. The Court Theatre reserves the right of admission. Latecomers may not be admitted to some productions.
3. Identification may be requested for discounted ticket/season ticket prices.

SEASON TICKETS

4. The Court Theatre will allocate the best available seats based on the patron's guidelines but cannot guarantee seat location.
5. Season ticket holders who wish to be seated with friends who are also booking season tickets are asked to specify their names on the application forms and/or post their forms in the same envelope.
6. If you have made a companion booking your seating allocation may change. Companion bookings and tickets booked outside of season tickets are charged at box office prices.
7. Productions staged outside of the Main Stage have different seating plans than on the booking form. Some shows/venues may be general admission (ie: non-assigned seating).
8. For re-subscribers who are changing their usual night or changing the number attending, your previous seats may not be available. In this case the most similar available will be allocated.

9. Specific dates are not able to be selected for season ticket allocation. Season tickets can be changed to another date once that performance is on sale to the public.

EXCHANGES/REFUNDS

10. All tickets for exchange must be returned to The Court Theatre at least one working day prior to the performance date. Under no circumstances will tickets be exchanged after the performance date. Tickets are not transferable between plays.
11. Any request to change an existing season ticket or transfer tickets gives The Court Theatre the authority to change the location of the seats. Every effort will be made to reallocate the seats within the season ticket holder's guidelines but seat location cannot be guaranteed.
12. Refunds will only be made in accordance with the Consumer Guarantees and the Fair Trading Acts.

BOOKING INFORMATION

The preferential seat booking period for existing season ticket holders is open until 20th April 2018.

To book a Court Theatre season ticket please complete the booking form at the back of this brochure or complete an online form on our website.

For assistance with season ticket bookings, please contact The Court Theatre on (03) 963 0870.

For full terms and conditions please see www.courttheatre.org.nz/terms

BECOME A SUPER SUBSCRIBER

Super Subscriber, the quick and easy way to get the complete 2018/19 season package for one great price. As a Super Subscriber you will receive:

A ticket to each of the eight mainstage Court shows

A programme to each of the eight Court shows

A ticket to each of the Forge add-ons

A ticket to each of the Indelible Ink readings

A prepaid beverage to each of the eight Court shows from Giesens @ The Court

All subscribers enjoy the following benefits:

Save up to 41% off your tickets
Get your tickets before they go on sale to the general public
Get the first pick of the best seats in the house on the best night, which you will retain for every show. And the following season you get the first right to renew those prized seats for another year
Never miss a show because your seats are secured well before the show sells out
And, by subscribing, you enable The Court to continue to bring the best theatre to Aotearoa.

FOR OFFICE USE

SEASON TICKET FORM

Alternatively you can complete this form online at www.courttheatre.org.nz/subscribe for immediate processing of your order.

1 PERSONAL DETAILS

please complete in full

Name:		
Address:		
Postcode:	Supporter Membership No.	
Phone (home):	(work):	(mobile):
Email address:		<input type="checkbox"/> Please add me to your e-newsletter list

ATTEND AS A GROUP optional

☐ There are other season ticket holders I would like to sit with:

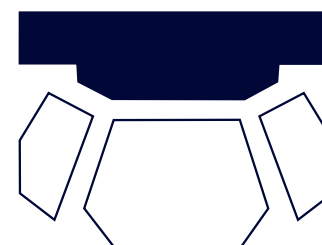
Names:	

Please note: If you have selected other people to sit with, your season ticket will NOT be processed until forms from ALL the ticket holders named have been received – it may be beneficial to send your forms in together. Please ensure you have specified the same show times.

2 THE SEATS

Draw a cross where you'd like to sit. If the exact seats aren't available, we'll reserve others close by, taking note of your preference for aisle, centre, front, or rear seats.

☐ I am a current season ticket holder and wish to retain the same seats for the same night. SEAT NO: _____



SPECIAL REQUIREMENTS:

- ☐ I require _____ wheelchair seats (front row only)
- ☐ I require assistance to / from my seat.
- ☐ Hearing loop required.

Please Note:
All patrons with special requirements must report to the Chief Usher 20 minutes before performance time.

COMPANION PRICES

	Standard	JC Superstar
Adult	\$55	\$69
Senior	\$48	\$57
Supporter	\$46	\$54
U25	\$30	\$30

FOR SEASON TICKET ENQUIRIES

please phone 03 963 0870 or
email seasontickets@courttheatre.org.nz

Please post this completed form to: The Court Theatre, PO Box 268, Christchurch 8140

3 THE NIGHTS

Select the night you wish to attend.

- ☐ Mon (6.30pm)
- ☐ Mon Forum (6.30pm)+
- ☐ Tue (7.30pm)
- ☐ Wed (7.30pm)
- ☐ Thu (6.30pm)
- ☐ Fri (7.30pm)
- ☐ Sat (2pm matinée)*
- ☐ Sat (7.30pm)

* A forum is the opportunity for audience members to ask the cast and crew questions after the show

* MATINÉES

Stephen King's Misery	18 August 2018
Mum's Choir	6 October 2018
Astroman	10 November 2018
Jesus Christ Superstar	8 December 2018
Elling	9 March 2019
EQ F@#%ing C	13 April 2019
Hedwig and the Angry Inch	25 May 2019
Les Liaisons Dangereuses	13 July 2019

TURN OVER >>

4 SUPER SUBSCRIPTION

Please indicate the number of subscriptions in the brackets below
I would like to be a SUPER SUBSCRIBER (See previous page for details)

Adult \$499 x []	Senior 65+ \$459 x []	Under 25 \$389 x []	Court Supporters Member \$439 x []
SUPER SUBSCRIPTION TOTAL = \$ [A]			

OR I would like to build my own subscription

5 BUILD YOUR OWN SUBSCRIPTION

Subscriber tickets - Minimum six shows each

	Ticket Type	QTY	Subs Total	Prog/ Vouch	Drink/ Preor	Total
STEPHEN KING'S MISERY 4-25 August 2018	Adult Subscriber	\$46	\$			\$
	Senior 65+ Subscriber (ID required)	\$41	\$			\$
	Supporters Subscriber	\$39	\$			\$
	Under 25	\$30	\$			\$
MUM'S CHOIR 15 September - 6 October 2018	Adult Subscriber	\$46	\$			\$
	Senior 65+ Subscriber (ID required)	\$41	\$			\$
	Supporters Subscriber	\$39	\$			\$
	Under 25	\$30	\$			\$
ASTROMAN 27 October - 10 November 2018	Adult Subscriber	\$46	\$			\$
	Senior 65+ Subscriber (ID required)	\$41	\$			\$
	Supporters Subscriber	\$39	\$			\$
	Under 25	\$30	\$			\$
JESUS CHRIST SUPERSTAR 24 November 2018 - 19 January 2019	Adult Subscriber	\$46	\$			\$
	Senior 65+ Subscriber (ID required)	\$41	\$			\$
	Supporters Subscriber	\$39	\$			\$
	Under 25	\$30	\$			\$
ELLING 23 February - 16 March 2019	Adult Subscriber	\$46	\$			\$
	Senior 65+ Subscriber (ID required)	\$41	\$			\$
	Supporters Subscriber	\$39	\$			\$
	Under 25	\$30	\$			\$
EQ F@#%ING C 30 March - 27 April 2019	Adult Subscriber	\$46	\$			\$
	Senior 65+ Subscriber (ID required)	\$41	\$			\$
	Supporters Subscriber	\$39	\$			\$
	Under 25	\$30	\$			\$
HEDWIG AND THE ANGRY INCH 11 May - 1 June 2019	Adult Subscriber	\$46	\$			\$
	Senior 65+ Subscriber (ID required)	\$41	\$			\$
	Supporters Subscriber	\$39	\$			\$
	Under 25	\$30	\$			\$
LES LIAISONS DANGEREUSES 22 June - 20 July 2019	Adult Subscriber	\$46	\$			\$
	Senior 65+ Subscriber (ID required)	\$41	\$			\$
	Supporters Subscriber	\$39	\$			\$
	Under 25	\$30	\$			\$
FORGE ADD-ONS						

FORGE ADD ONS

IDEATION 2-23 June 2018	\$30	\$
THE EARLY EARLY LATE SHOW 7-21 July 2018	\$15	\$
AUDIENCE INTERACTIVE (FREE) 15 July 2018 - see THE COURT IS YOUR THEATRE page for more info	\$0 (free)	N/A
A CHRISTMAS CAROL 1 - 22 December 2018	\$15	\$
		D

6 DONATIONS

(Optional) ☐ Anonymous donation

Learn more about supporting The Court at courtfoundation.org.nz/giving/

Ticket Total (B+C) or (A) \$_____ + Donation (E) _____ + Service & Handling \$4.00

Total Donation	\$
----------------	----

Total \$	
----------	--

7 PAYMENT DETAILS

☐ I enclose a cheque payable to The Court Theatre Trust or Please charge my Visa Mastercard (circle one)

[illegible]

Wine
GREAT
People
GREAT
Times
GREAT



Proud Supporters of The Court Theatre

GIESENWINES.CO.NZ



THE
COURT
THEATRE

THE MERIDIAN ENERGY SEASON

18/19

www.courttheatre.org.nz

PRINCIPAL
SPONSOR



SEASON
SPONSOR



CORE FUNDER



Proudly printed by Caxton